



westermo®

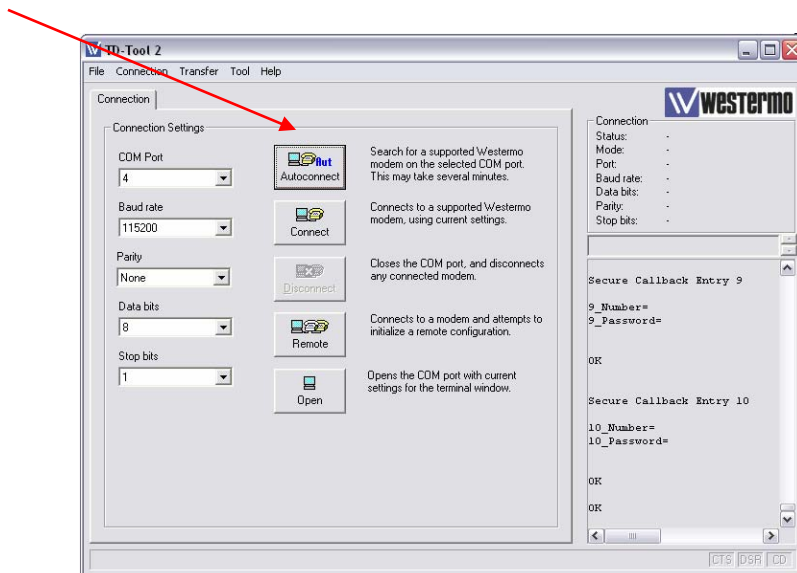
INFORMATION

www.westermo.com

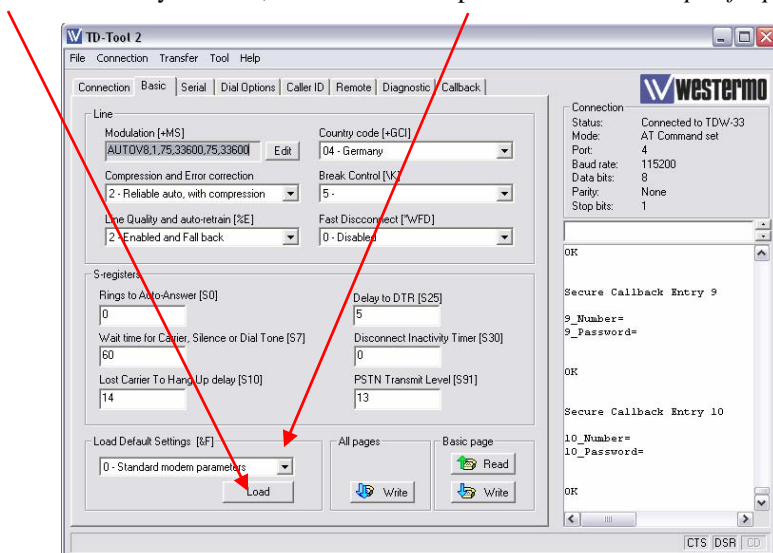
Firmware Upgrade via TD-Tool 2

Westermo Teleindustri AB

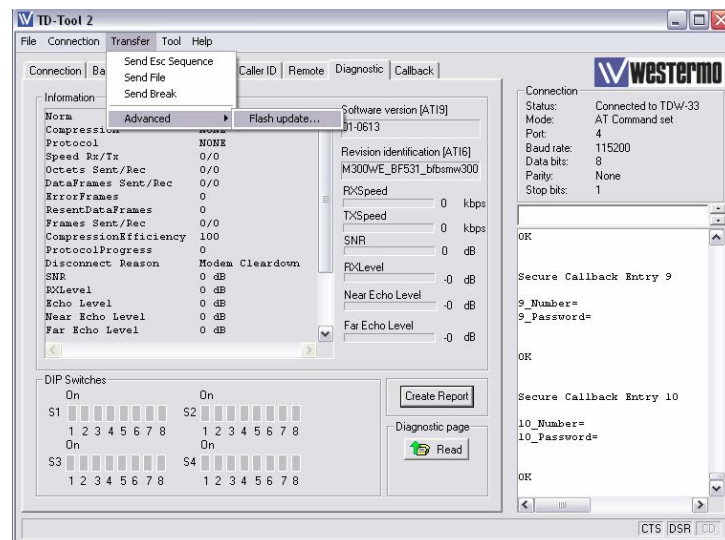
1. Start TD-Tool2 on your computer , if you haven't installed it, install it first from the CD that is delivered with the modem. Check if the TD-Tool Version is 4200.1508 2.08 in the *About* menu
2. Choose the right COM-Port and connect the modem via a straight RS-232 cable to your computer
3. Click on the Autoconnect button, after a short time, the modem shall be found and read out.



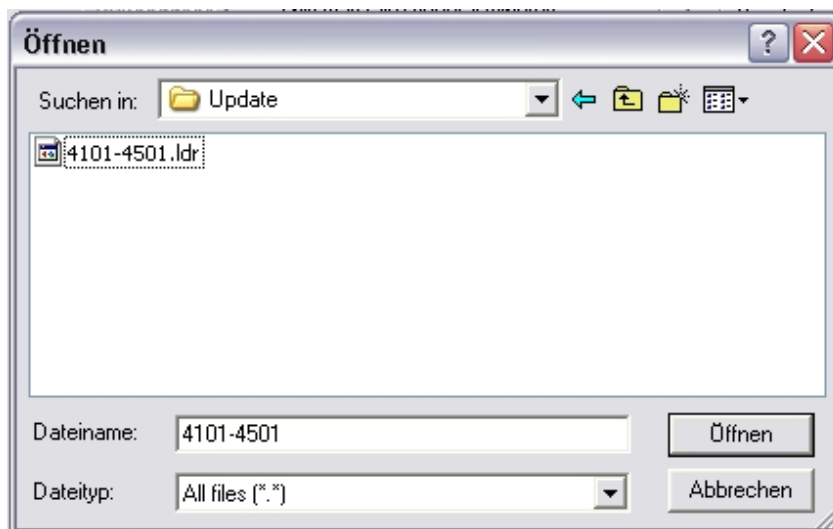
4. Change to the Basic registercard
5. Click on the *Load* button for factory defaults, choose in the drop field 2- Westermo specific parameters and click again on Load



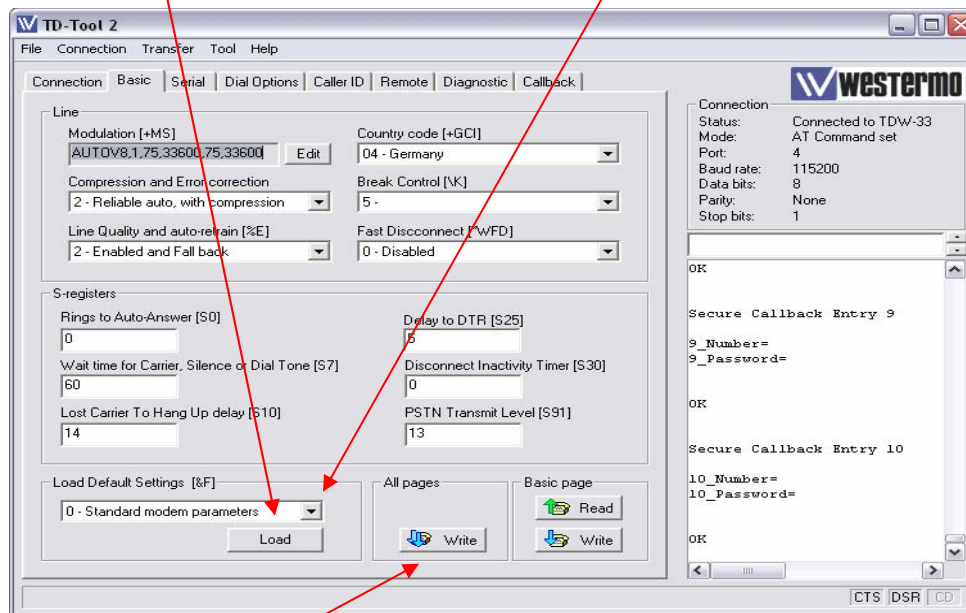
6. Select in the *Transfer menu Advanced/Flash update*



7. In the following window, choose the .ldr firmware file and click Open.



8. A Warning message appears, click OK.
9. The upgrade will start and after the update process, the message Download successful will appear.
10. Click on the *Load* button for factory defaults, choose in the drop field *2- Westermo specific parameters* and click again on *Load*



11. Click on *write all pages*.
12. Reset the unit via powersupply afterwards, and reconnect via TD-Tool 2

If the Upgrade does not succeed, set the modem manually either via DIP-switches or AT+IPR=115200 to 115.2Kbit/s and retry.

If the Flashing routine gets stuck, and the modem shows only DTR / RTS / PWR Led's, reset the unit manually via supply and close TD-Tool 2

If TD-Tool 2 doesn't work on your computer, than try to perform the update with a terminal software, like shown in the upgrade example UpdateTelemodemTerminal.pdf