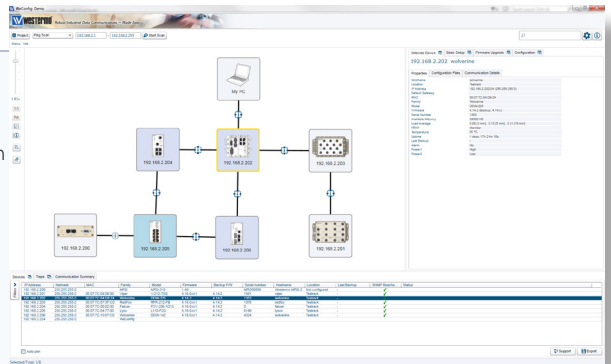


# WeConfig

## Network Configuration Management Tool

- ⌘ Rapid configuration
  - Simplified and rapid network address allocation
  - Easy access to web based / CLI configuration interfaces
  - Functionality for optimised FRNT/RSTP configuration
  - Project Gold file deployment
- ⌘ Network monitoring and diagnostics
  - Topology map with graphical display and log functionality of a failed link
  - Communication statistics
  - SHDSL reach calculator and SNR diagnostics
  - Alarm and event tab
- ⌘ Easy maintenance of network components
  - Backup and restore of configuration files made easy
  - Controlled firmware version upgrade method
  - Auto-compare and alert of changes in configuration file
  - Support for DDM transceiver
- ⌘ Network security and overview
  - MAC addresses scan with automatic deployment
  - Hardening switch features and features for disabled unused ports
  - Installation reports and attachment of documents to projects or units
  - Configuration of IEEE802.1x port access for WeOS devices



WeConfig is a Network Configuration Management Tool (NCM) that simplifies both installation of a network and the ongoing maintenance once commissioned. The software scans the network for devices and displays discovered units with connections through a topology map. Basic IP address configuration as well as global parameter settings can be quickly assigned and further configuration easily facilitated. Use the project gold file to deploy a copy of a network. The new network will be exactly the same regarding configuration, number of devices, model and physical connections.

WeConfig is a simple monitoring-and-diagnostics tool, in addition to its configuration capabilities. WeConfig graphically highlights a failed link in a resilient network and records the time of the event. WeConfig also includes an SNMP traps log feature, as well as a view of communication details to assist with any resulting problem diagnosis. An alarm and event tab summarises received traps and alarm in a user-friendly way. The advanced SHDSL diagnostics feature records and graphically displays SNR values of the line, data will also be stored to CSV file for further analyze.

Once devices are configured and the network commissioned, a manual or periodic backup of all the device configuration files can be easily made and stored. In the event that a switch or router needs to be replaced in service a rapid download of the saved configuration file results in a fast network repair. The configuration baseline feature compares and alerts if changes have been made on a file. If a firmware upgrade is available for the network devices then a system-wide upgrade can be managed by WeConfig.

WeConfig enables the user to configure and maintain cyber security features available in WeOS. Spoofing protection features like MAC address filters and IEEE802.1x authentication parameters can easily be deployed and maintained. With WeConfig it is also possible to scan and harden switches with factory default passwords or switches that use unsecure protocols. With WeConfig you can easily create a report with details about topology, configuration and interconnection between units.